



ENCLAVE
AT ADOBE CREEK
APARTMENT HOMES



Discover Your New Lifestyle at Enclave at Adobe Creek

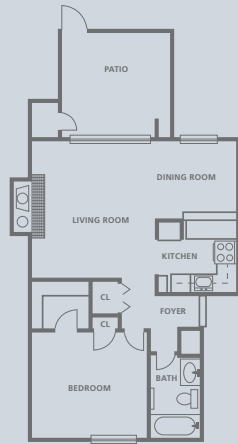
Welcome to The Enclave at Adobe Creek, a refreshing apartment community located in Petaluma, California, nestled in Sonoma wine country approximately 35 minutes from the Golden Gate Bridge. We are close to area shopping, world-class dining and entertainment found throughout Sonoma County. The Enclave offers comfortable and thoughtfully designed 1, 2 and 3 bedroom apartment homes and townhomes. You will

enjoy your sun-filled living space with features like oversized closets, fireplaces in select units and spacious private patios and balconies. Relax and take in the views of the surrounding valley hills and natural landscape. Our community connects you to all nearby conveniences via the 101 and 116 Redwood freeways. Imaginative and attainable living with 24 hour service staff is here at The Enclave at Adobe Creek.

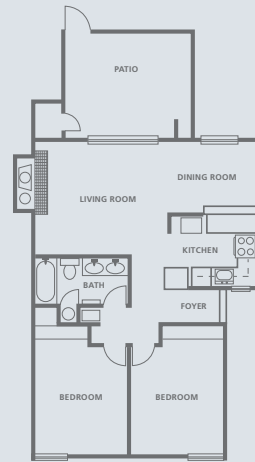
1, 2 and 3 Bedroom Apartment Homes and Townhomes Featuring:

Convenient location to freeways and shopping, efficiently styled kitchens, reserved parking, swimming pools, tennis court, basketball court and a clubhouse with exercise room.

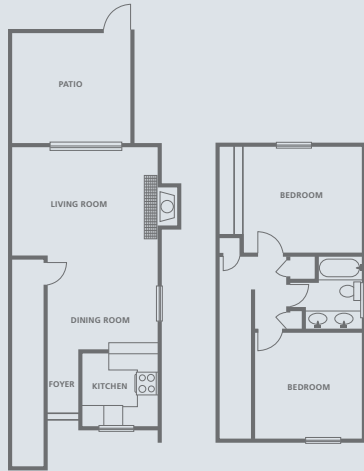
www.EnclaveAdobeCreek.com



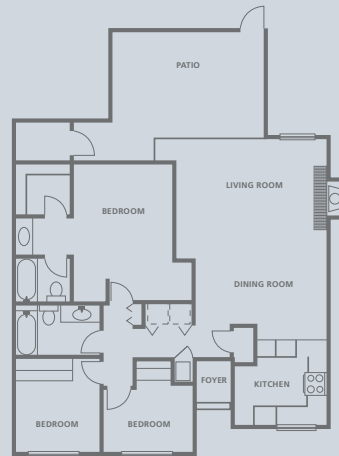
FLOORPLAN A
1 Bedroom, 1 Bath – 661 sq. ft.



FLOORPLAN B
2 Bedroom, 1 Bath – 885 sq. ft.



FLOORPLAN C
2 Bedroom, 1.5 Bath – 1,028 sq. ft.



FLOORPLAN D
3 Bedroom, 2 Bath – 1,301 sq. ft.

Call us today at (707) 778-1221

www.EnclaveAdobeCreek.com

One Lakeville Circle Petaluma, California 94954 Fax (707) 778-1259



We are pledged to the letter and spirit of the U.S. policy for the achievement of equal opportunity housing throughout the nation. We support and encourage an affirmative advertising and marketing program in which there are no barriers to obtaining housing based on race, color, religion, sex, handicap, familial status or national origin. The photographs contained in this document are merely intended as illustrations of the activities, interiors and concepts depicted herein. Interior photographs are not necessarily intended to depict the actual interiors and are subject to change. Furnishings, furniture, accessories, fixtures, floor coverings, wall coverings, window treatments, and appliances installed or displayed in the sales presentation center and/or model homes are shown for marketing purposes only, and shall not be included in the residence unless specifically provided for in the lease agreement.